

# INCINER8

Leading Provider of Thermal Treatment Solutions

## World's First Truly Mobile Cremator

A dignified approach to human cremation



introducing the  
**i8-MCU**



*A British designed and manufactured product*

# Hot Hearth Cremator

**More efficient by design.** Our innovative 3 stage secondary chamber makes this crematory machine the leader in its class when it comes to the concentration of emissions and dioxins in the exhaust gases.



- Completely Automated Operation
- 1600 deg C refractory
- "Hot Hearth" design
- Full featured control panel
- Hydraulic charging door
- Stainless steel finish
- Externally insulated
- Fully mobile, containerised solution
- 12 months limited warranty
- 3 stage secondary chamber

## BUILD QUALITY

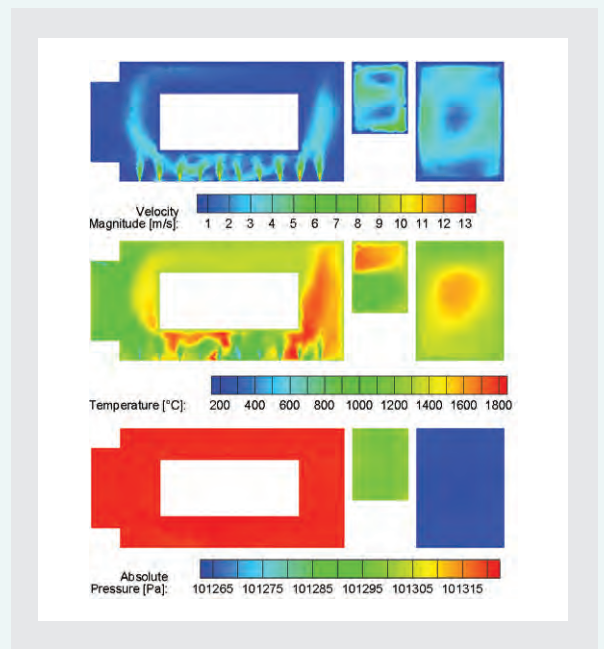
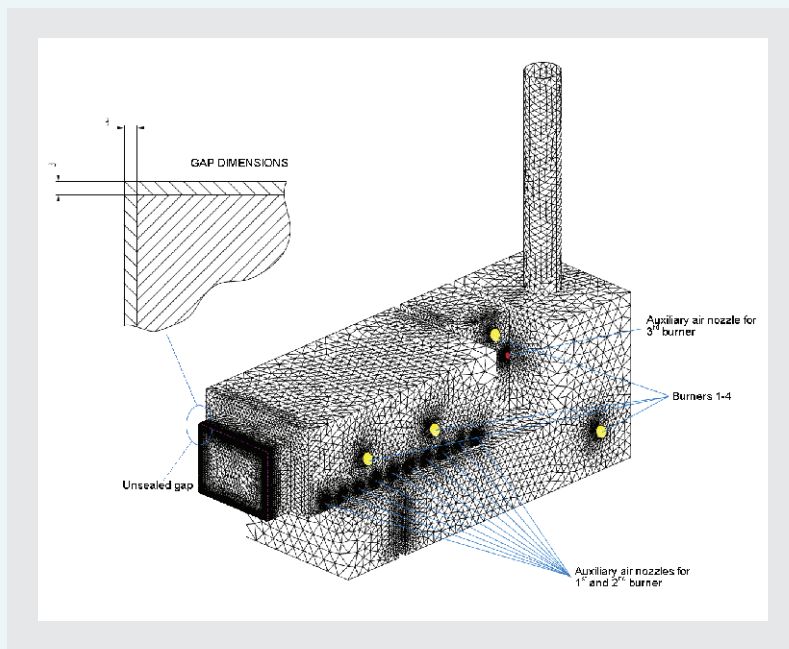
All our machines are hand-built in the UK by our team of thermal engineers and coded welders.

Once built, every machine is put through our rigorous 15 point quality check before it leaves the factory.

# Specifications

We listened to our customers. The i8-MCU is the result of ongoing discussions with a number of aid agencies. We identified that one barrier to market in developing regions was the location of a crematorium.

This is how the mobile cremation unit was born. During the research and development of this project it was essential to release a product that was better than anything currently in the market. Our hot hearth design coupled with the unique 3 stage secondary chamber mean this is one of the most efficient models on the market.



In the above drawing you can see our detailed CFD (Computational Fluid Dynamics) modelling was carried out well in advance of production. This allowed us to identify the optimum configuraton of both the chamber and burners. Careful consideration of this data and subsequent testing mean we now have a cremator that is "Best in Class"

Every aspect of the design is assessed and analysed before production. Above shows testing carried out during R&D. Velocity, chamber pressure and temperature are all carefully monitored. Excesses of 1000°C are often seen in the secondary chambers.

Cremation chamber capacity	4.2 m3
1st stage post-combustion	1.13 m3
2nd stage post-combustion	2.64 m3
3rd stage post-combustion	2.97 m3

## SPECIFICATIONS

Container size:	HC 20ft
Total weight:	20 tonnes
Cycle time:	60 - 90min
Temperature:	to 1600 °C

## Why a Hot Hearth Design?

Hot hearth vaporizes fluids released from the body during the cremation process more quickly so they burn off rapidly and do not collect on the floor.

This is particularly important when cremating large cases that contain big amounts of body fats and fluids.

# Crematoria Accessories

**We've got it covered.** To compliment our range of crematoria we supply a comprehensive variety of accessories and ancillary products. Manufactured to the same exacting standard as you would expect from Inciner8.



## I.D. Tags

Nothing threatens your business and investment, more than a potential loss of traceability and a handling mistake. We hear about it all too often and it's usually catastrophic to the business. Some countries insist on the use of Cremation ID Discs. You get 3 lines of 16 characters to imprint your facilities vital information as well as a sequential serial number.



## Lift Table

The Rechargeable Battery Powered, Hydraulic Lift Table is engineered for use in loading funeral coaches, cooler storage, and cremation operations. It is designed with a narrow frame to allow use in tight spaces. It is easy to maneuver and extremely durable. The load platform has 5 rollers to load / unload and a locking system when a stationary load is desired.



## Cremation Rollers

A cremation chamber floor replacement can cost up to £5,000. The first factor in floor life is the operational procedures in place. If you are cremating without the use of cardboard rollers you are damaging your floor. Heavy Duty, 18" Length, 2" Diameter, 0.200" Wall Thickness. Sold in Cases of 60 Rollers. Our prices are extremely competitive.



## Cremation Pans

For the cremation of small cases or infant cremations, the Cremation Pan is useful in keeping the cremated remains contained. Use of the Cremation Pan will speed up your clean out time. Sturdiest Cremation Pan in the industry. Heavy Duty Type 304 Stainless Steel. 20" Diameter, 12 gauge bottom, 14 gauge side.



# Processing Station

The Ventless Processing Station is engineered to process cremated remains to a consistency able to fit into a standard size urn, in 30 seconds. It has a direct drive, 1.5 horsepower motor with overload protection. It can be powered with a standard 110V/30A outlet. It is delivered, ready for operation.



# Hand Magnet

Removing metals from the cremated remains prior to processing is important to ensure operator safety and equipment integrity. The Hand Magnet makes this easy with it's finger pull release. Move the magnet through the cremated remains, remove and release the metals into a separate container.



# Rake Head

The tool of choice for repositioning during cremation. Also useful in collecting bulk cremated remains. Save your brush life for the detailed clean up. The more you use the rake head, the less you use the brush head. Standard 1/2" pipe thread.



# Strip Brush

The next generation of cremation clean-out brushes is here. This brush has 6 curtains of steel bristles. If you are still using the old style, single curtain "strip brushes" this is the upgrade you've been looking for. With so many more bristles and additional weight, you will immediately see a difference in the time and energy you spend sweeping out chambers.



# Order Online

All accessories and consumables can be ordered from our website:

[www.store.inciner8.com](http://www.store.inciner8.com)



# Sales, Support & Servicing

We pride ourselves on our global reputation. We have installations in over 170 countries from the Antarctic to Bonaire. We understand cultural needs vary and our international team are always on hand to assist you.



## Technical Support

**Tel:** +44 (0) 1704 884020  
**Email:** [techsupport@inciner8.com](mailto:techsupport@inciner8.com)  
**Link:** [www.inciner8.com/techsupport](http://www.inciner8.com/techsupport)

## Sales

**Tel:** +44 (0) 1704 884020  
**Email:** [enquiries@inciner8.com](mailto:enquiries@inciner8.com)  
**Link:** [www.inciner8.com/contact](http://www.inciner8.com/contact)



Call our experts on +44 (0) 1704 884020

AGENTS / DEALER STAMP

# INCINER8

INCINER8 Limited  
Unit 2 Canning Road Industrial Estate  
Canning Road, Southport PR9 7SN United  
Kingdom